

Changing the world one t-shirt at a time.

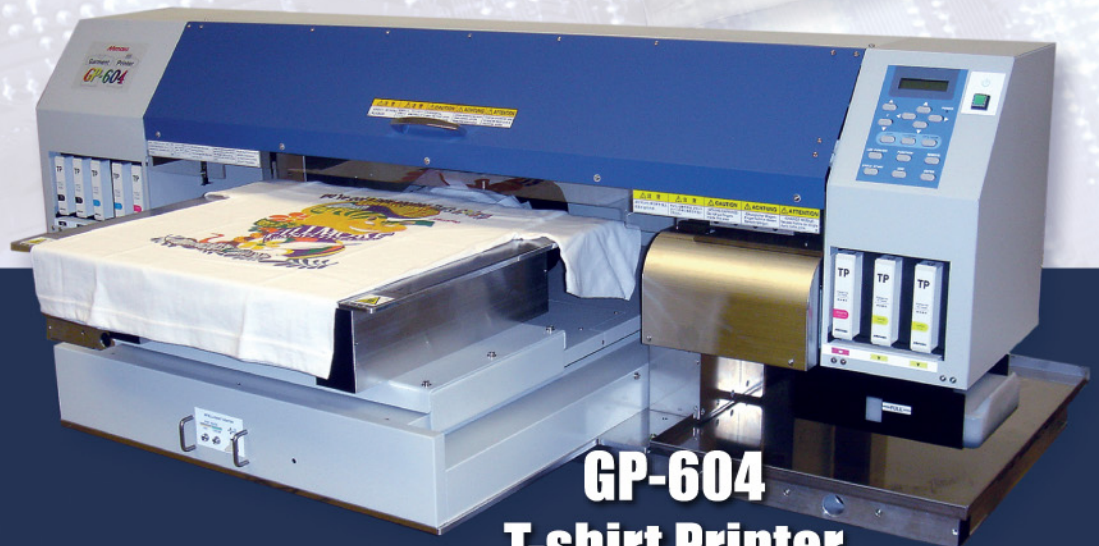
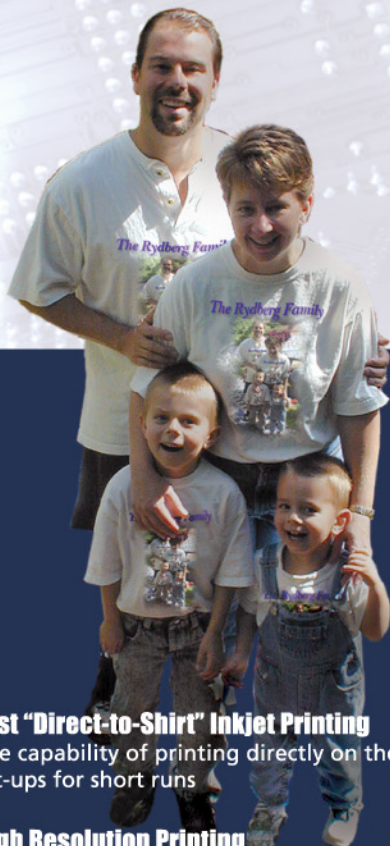
Custom shirts, anytime, even if you need just one.

What will you print with the new Mimaki GP-604?

It's what you've been waiting for — full-color digital outputs, direct to 100% cotton T-shirts. The easy to operate Mimaki GP-604 "Direct-To-Shirt" Color Inkjet Printer is perfect for short-run jobs, all the way down to a quantity of just *one*.

No film, no screens, just dazzling results.

Inkjet printing directly to 100% cotton shirts



Fast "Direct-to-Shirt" Inkjet Printing

The capability of printing directly on the t-shirt eliminates costly set-ups for short runs

High Resolution Printing

4-color, permanent washable inks produce accurate images with resolution up to 720 x 720 dpi

Easy To Operate

A large 16.5" x 24" image print area to print any light colored t-shirt in any size by exchanging standard jigs

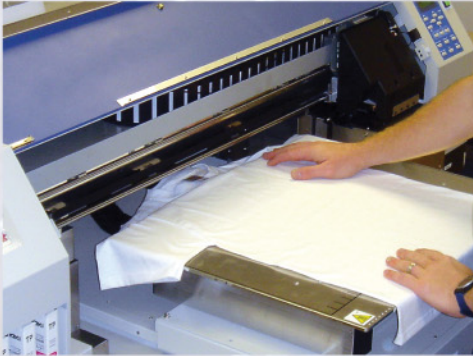
Efficient Head Operation

Automatic head height adjustment for high quality prints, helps avoid head damage from contact with media

Mimaki
ENGINEERED FOR QUALITY

5 easy steps to a

1 Lay shirt flat on plate



It is not necessary to hold the fabric down as the print heads do not come in contact with the fabric. This allows you to print on any part of the fabric including the collar, shoulder and sleeves.

2 Set printing area

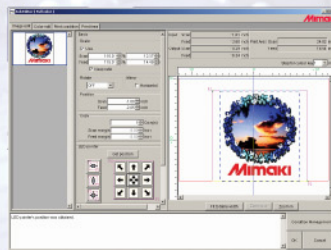


A laser dot measures the printing area. This need only be done with the first print, and does not need to be readjusted unless the size of the printing area changes dramatically. The LED sensor will adjust height of print head for use with different thicknesses of material.

3 Upload image to printer software



Using the Mimaki's *Raster Link GP* software included with the printer, you can upload tiff, jpeg, bmp or eps...files



a colorful shirt:

4 Print image



A full color print of about 10" x 12" will take about five minutes to print at the highest resolution of 720 x 720 dpi.

5 Place shirt on heat press



NOTE: A conveyor dryer can also be used.



Specialty Designed Pigment Ink

The GP-604 uses pigment ink that was specially designed for ink jet printing directly onto 100% cotton fabric. No special pretreatment of the fabric is necessary. A simple post-print heat treatment with a heat press or conveyor drier cures the ink and ensures a smooth finish. Ink cartridges can be replaced quickly and easily without making a mess. A computer chip on the cartridge allows the remaining ink amount to be displayed on the control panel even during operation.



Inkjet printing directly to 100% cotton shirts with the Mimaki GP-604!



IEEE1394 port enables high-speed communication

The IEEE1394 port is equipped as an interface for data reception from a personal computer.

Intelligent heater system

This system controls the heater for the platen. The shirt is heated before printing resulting in brighter colors.



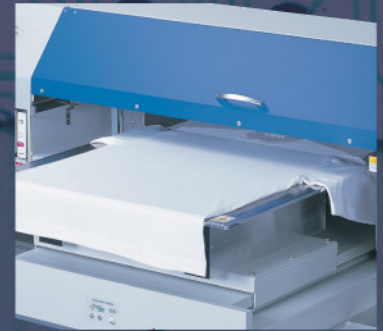
Control panel provides functional display

The LCD panel displays the printing configuration during operation and is backlit so that it can be easily seen.



Four print heads with 360 nozzles each

Four piezo electric heads enable print quality up to 720 x 720 dpi. Two ink cartridges of the same color are used for each print head with one cartridge supplying ink for half a print head (180 nozzles) and another cartridge supplying ink for the other half for a total of eight cartridges (4-color CMYK x 2 cartridges for each color).



Excellent Quality · Easy Printing · Easy Maintenance

GP-604 Garment Printer General Specifications

Item	Specifications
Print head	Type: On-demand piezo head, 4 heads in-line, each color 360 nozzles
	Height: 0 to ± 5.7 in. (0 to 145 mm)
Printing area	Maximum width: 24 in. (610 mm)
	Maximum length: 16.5 in. (420 mm)
Print mode	360 x 540 dpi: 3 / 6 / 12 pass, Bi/Uni direction
	360 x 720 dpi: 2 / 4 / 8 pass, Bi/Uni direction
	720 x 720 dpi: 2 / 4 / 8 pass, Bi/Uni direction
Ink	Type: Pigment ink for textiles
	Color: Black, Cyan, Magenta, Yellow
	Ink volume: 420 cc/color (210 cc x 2 cartridges/color)
Interface	Centro (IEEE-1284 nibble mode, bite mode, ECP mode), IEEE-1394
Power supply	AC 100V to 240V ± 10% (auto voltage), 50/60 Hz ± 1 Hz
Power consumption	980VA or less with heater
Ambient conditions	Temperature 59°F (15°C) – 86°F (30°C), Humidity: 35% – 65% RH
External dimensions	(W) 65 in. (1660 mm) x (D) 42 in. (1070 mm) x (H) 23 in. to 26 in. (580 mm to 650 mm)
Weight	Less than 330 lbs. (150 kg)

All our products are manufactured under our quality assurance system certified by ISO 9001.

JSA
QMS
ISO 9001:2000
MK111 A-2002-09-5-a

JAB
OS Accreditation

All trade marks or registered trade marks are the property of the respective owners.

Information shown is subject to change without notice. Install proper ventilation, and inspect equipment regularly. Post effects of organic solvents on people, warnings, etc. All trade marks or registered trade marks are the property of the respective owners.

Mimaki USA, Inc. www.mimakiusa.com
140 Satellite Boulevard, NE, Suwanee, Georgia 30024-7128
Atlanta 888-530-3988 · Boston 888-530-3986 · Los Angeles 888-530-3987

DEALER: